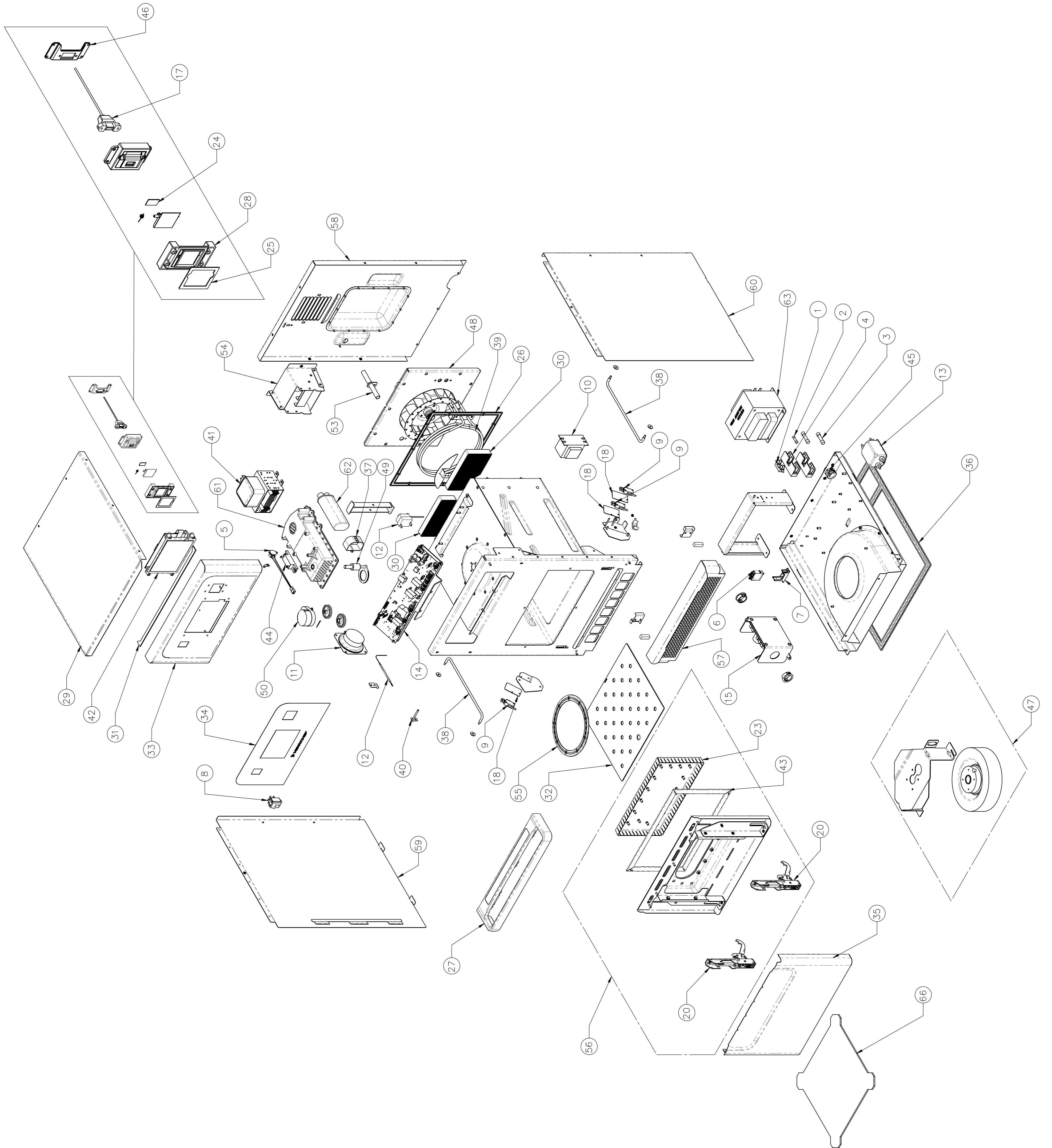


e1s Oven Exploded View



## Merrychef eikon e1s USA 60Hz Oven

LEGEND	1234567	e1s Unique Part
	1234567	eikon Common Part
	1234567 ++	e1s USA Unque Part

## Recommended Parts List

## Recommended Min Stock Holding &amp; Service List

Service Manual Exploded View	Part Number	Description	Qty Per Oven	Unit	1-10 Ovens	11-50 Ovens	51-100 Ovens	Recommended Service List	Alternative Common eikon Part
1	30Z1504 ++	US FUSE HOLDER	1	EA	1	3	6		
2	30Z1507 ++	12A FUSE SLOW/B	1	EA	1	3	6	1	
3	30Z1177	LARGE 20A FUSE	2	EA	2	6	12	2	
4	30Z1599	FUSE HOLDER HC101A	2	EA	2	6	12		30Z1178
5	S16-664	MAGNETRON OVERHEAT STAT - JIAMA	1	EA	1	3	6	1	
6	30Z1439	RELAY 12V OMRON	1	EA	1	3	6	1	
8	30Z1584	e1s ON/OFF SWITCH	1	EA	1	3	6	1	
9	30Z1586	MICROSWITCH SHORT ARM	3	EA	3	9	18	3	
10	30Z1587	LV TRANS HCT	1	EA	1	3	6	1	
11	30Z1588	SPEAKER	1	EA	1	3	6		DR0021
12	30Z1589	CAVITY OVERHEAT STAT	1	EA	1	3	6	1	
13	30Z1593 ++	e2s MAINS FILTER	1	EA	1	3	6		
14	P30Z5021	CONTROL PCB UNI <b>SRB</b>	1	EA	1	3	6	1	
15	P30Z5022 ++	e2s MTR SPEED CONTROLLER	1	EA	1	3	6		
17	31Z0600 ++	ADAPTOR USB / LEAD	1	EA	1	3	6		
18	31Z0680	ISOLATOR PLATE	3	EA	3	9	18		
20	31Z1374	FARINGOSI HINGE	2	EA	2	6	12	2	
23	DC0324	DOOR CHOKE	1	EA	1	3	6		
24	DB0277	USB SEAL e2s	1	EA	1	3	6		
25	DB0279	MOUNT SEAL e2s	1	EA	1	3	6		
27	PSC132	e1s DOOR HANDLE ASSY-RoW	1	EA	1	3	6		
28	DC0179	e1s USB INTERFACE	1	EA	1	3	6		
29	DC0189	TOP CASEWORK	1	EA	1	3	6		
30	DC0191	CATALYST	2	EA	2	6	12		
31	DC0219	CONTROL PANEL GASKET	1	EA	1	3	6		
32	PDC0364	IMPINGER PLATE BESTHERMO F	1	EA	1	3	6	2	
33	DC0244	CONTROL PANEL	1	EA	1	3	6		
34	DC0245	FLAT OVERLAY	1	EA	1	3	6	1	
35	DC0248	DOOR SKIN	1	EA	1	3	6		
36	DC0288	MOULDED BASE SEAL	1	EA	1	3	6		
37	DC0301	CAPACITOR CLIP	1	EA	1	3	6		
38	DC0320	WIRE RUNNER	2	EA	2	6	12		
39	PDR0142	HEATER ELEMENT 2200W	1	EA	1	3	6		
40	DR0354	THERMOCOUPLE TYPE K	1	EA	1	3	6	1	
41	P30Z1472	MAGNETRON	1	EA	1	3	6	1	
42	P30Z5009	TOUCH SCREEN <b>BTS</b> UI PCB	1	EA	1	3	6	1	
43	PSB316	e2s DOOR SEAL	1	EA	1	3	6	1	
44	PSR109	DIODE REPLACEMENT KIT	1	EA	1	3	6	1	
45	31Z1405	M25 GLAND	1	EA	1	3	6		
45	31Z1406	M25 GLAND LOCK NUT	1	EA	1	3	6		
46	SB374	USB PLASTIC PARTS ASSY	1	EA	1	3	6		
47	PSC236 ++	e1s RADICAL FAN ASSY	1	EA	1	3	6	1	
49	PSC222	e1s STIRRER ASSEMBLY	1	EA	1	3	6		
50	PSC223	e1s STIRRER MOTOR ASSEMBLY	1	EA	1	3	6	1	
53	SC333	STEAM PIPE ASSY	1	EA	1	3	6		
54	SC341	DUCT ASSEMBLY	1	EA	1	3	6		
55	SC344	PARTITION PLATE	1	EA	1	3	6	1	
56	PSC348	e1s DOOR FRAME ASSY	1	EA	1	3	6		
57	SC349	AIR FILTER FRAME ASSEMBLY	1	EA	1	3	6	1	
58	SC372	US BACK PANEL ASSY	1	EA	1	3	6		
59	SC360	LH SIDE CASEWORK	1	EA	1	3	6		
60	SC361	RH SIDE CASEWORK	1	EA	1	3	6		
61	PSR317	e2s WAVEGUIDE ASSEMBLY	1	EA	1	3	6		
62	30Z1329	0.75uF CAPACITOR 2500V	1	EA	1	3	6	1	
63	P30Z1558	MV HT TRANSFORMER 60Hz	1	EA	1	3	6		
48 & 26	PSC234 ++	e1s US CONVEC MOTOR ASSY	1	EA	1	3	6	1	
Not Numbered	DV0552	GEAR - StIRRER WHEEL	1	EA	1	3	6		
Not Shown	30Z1457	eikon SRB 1.25A FUSE	1	EA	1	3	6		
Not Shown	31Z0186	SILASTIC - BLACK (DOOR SEAL)		TUBE	1	3	6	1	
Not Shown	31Z0693	CABLE BTS UI SRB	1	EA	1	3	6		31Z0688
Not Shown	32Z7082	PERSONALITY MODULE e1s <b>QTS</b>	1	EA	1	3	6	1	
Not Shown	32Z7091 ++	PERSONALITY MOD e1sUS <b>SRB</b>	1	EA	1	3	6	1	
Not Shown	DR0186 ++	COMMON MODE CHOKE ASSY	1	EA	1	3	6		
Not Shown	PSC128	e1s DOOR M/SWITCH ASSY KIT	2	EA	2	6	12		
Not Shown	PSC311	e1s DOOR INSULATION KIT	1	EA	1	3	6		
Not Shown	SC310	CAVITY INSULATION KIT	1	EA	1	3	6		
Not Shown	SR287 ++	MAINS SUPPLY LEAD XH	1	EA	1	3	6		

**Merrychef eikon e1s USA 60Hz Oven**

LEGEND

1234567	e1s Unique Part
1234567	eikon Common Part
1234567 ++	e1s USA Unque Part

**Recommended Parts List**

**Recommended Min Stock Holding & Service List**

Service Manual Exploded View	Part Number	Description	Qty Per Oven	Unit	1-10 Ovens	11-50 Ovens	51-100 Ovens	Recommended Service List	Alternative Common eikon Part
------------------------------	-------------	-------------	--------------	------	------------	-------------	--------------	--------------------------	-------------------------------

**e1s Accessories**

66	DC0322	FLAT COOK PLATE	1	EA	1	3	6		
Not Shown	32Z4080	e1s SOLID BASKET 11"x11"	1	EA	1	3	6		32Z4080
Not Shown	32Z4136	e1s LINER	1	EA	1	3	6		32Z4088
Not Shown	DC0327	e1s WIRE RACK		EA	1	3	6		
Not Shown	SR318	GUARDED PADDLE e2s	1	EA	1	3	6		

NOTES: **NOTE-1**